

PLEASE CHECK WWW.MOLEX.COM FOR LATEST PART INFORMATION

Part Number: [0192070002](#)
Status: **Active**
Description: NylaKrimp™ Parallel Splice for 18-22 AWG Wire

Documents:

[Drawing \(PDF\)](#) [RoHS Certificate of Compliance \(PDF\)](#)

Agency Certification

UL E32244

General

Product Family Splices
 Series [19207](#)
 Crimp Quality Equipment Yes
 Mil-Spec N/A
 Product Name NylaKrimp™, Parallel

Physical

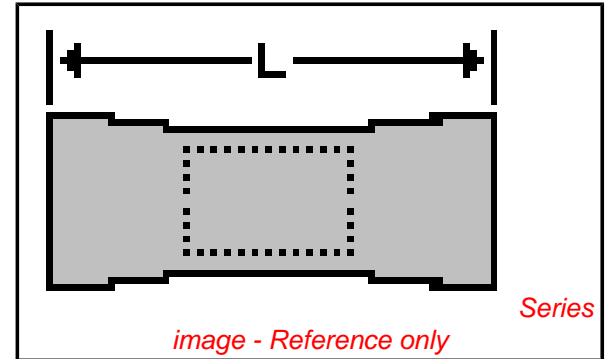
Barrel Type Closed - Brazed
 Flammability 94V-0
 Insulation Nylon (PA)
 Packaging Type Bag
 Wire Insulation Diameter 3.00mm (.118") max.
 Wire Size AWG 18, 20, 22

Material Info

Old Part Number AS-N-302

Reference - Drawing Numbers

Sales Drawing CD6000106



EU RoHS

**ELV and RoHS
Compliant**

REACH SVHC

Not Reviewed

**Halogen-Free
Status**

Not Reviewed

China RoHS



**Need more information on product
environmental compliance?**

Email productcompliance@molex.com
 For a multiple part number RoHS Certificate of
 Compliance, [click here](#)

Please visit the [Contact Us](#) section for any
 non-product compliance questions.

Search Parts in this Series

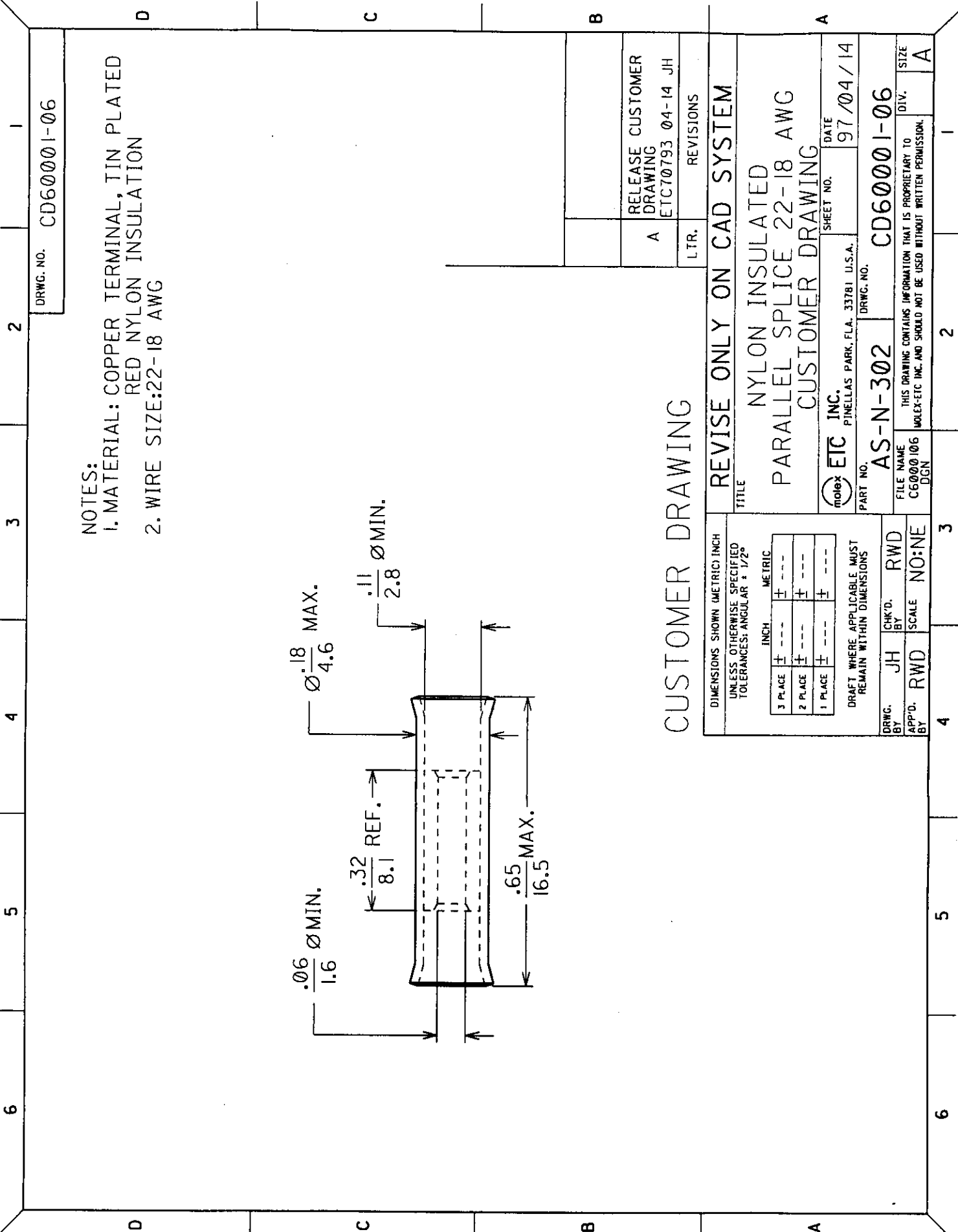
[19207Series](#)

Application Tooling | [FAQ](#)

*Tooling specifications and manuals are
 found by selecting the products below.
 Crimp Height Specifications are then
 contained in the Application Tooling
 Specification document.*

Global

Description	Product #
Hand Crimp Tool	0640010100
Hand Crimp Tool	0640010300
Crimp Head for the AT-200™ Pneumatic Hand Tool	0640050100
Crimp Head for the AT-200™ Pneumatic Hand Tool	0640050300



NOTES:
 1. MATERIAL: COPPER TERMINAL, TIN PLATED
 RED NYLON INSULATION
 2. WIRE SIZE: 22-18 AWG

DRWG. NO. CD60001-06

CUSTOMER DRAWING

DIMENSIONS SHOWN (METRIC) INCH UNLESS OTHERWISE SPECIFIED TOLERANCES: ANGULAR ± 1/2°	
3 PLACE	±
2 PLACE	±
1 PLACE	±
DRAFT WHERE APPLICABLE MUST REMAIN WITHIN DIMENSIONS	
DRWG. BY	JH
CHK'D. BY	RWD
APP'D. BY	RWD
SCALE	NO:NE

TITLE REVISE ONLY ON CAD SYSTEM	
NYLON INSULATED PARALLEL SPLICE 22-18 AWG CUSTOMER DRAWING	
ETC INC. PINELLAS PARK, FLA. 33781 U.S.A.	SHEET NO. 97/04/14
PART NO. AS-N-302	DRWG. NO. CD60001-06
FILE NAME C6000106 DGN	THIS DRAWING CONTAINS INFORMATION THAT IS PROPRIETARY TO MOLEX-ETC INC. AND SHOULD NOT BE USED WITHOUT WRITTEN PERMISSION.
DIV. A	SIZE A

A	RELEASE CUSTOMER DRAWING ETC70793 04-14 JH
L.T.R.	REVISIONS